

# VERSUZ

SURFACE / SUSPENDED / IP54



3 years warranty

30,000 hrs  
L70/B50  
Ta=25°C

220-240V  
50-60Hz



## Versuz IP54

### S IP54

Surface / Suspended

#### LIGHT OUTPUT

up to 3420 lm

#### EFFICIENCY

up to 122 lm/W

#### WIRING

Input Voltage: 170-240VAC 50-60Hz  
Ambient Temp: -10~35 °C  
Supplied with white cable (3x0.5mm<sup>2</sup> L=600mm)

#### CCT

3000 - 4000K

#### CRI

≥ 80 Ra

#### MATERIALS

##### > Housing

Anodised aluminium profile

##### > Diffuser

Opal PMMA high diffusive  
on request: Opal PC

##### > End caps

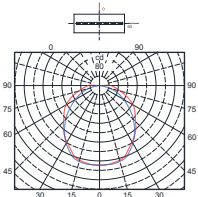
Transparent PC

#### LIGHT DISTRIBUTION

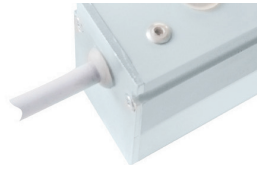
Direct

#### ACCESSORIES

Single suspender 1.5 m  
Transparent Feeding Cable for Versuz Surface and Suspended  
3 X 0.75mm<sup>2</sup>.  
VDE certified cable L=1m ( the length of the cable can be different )

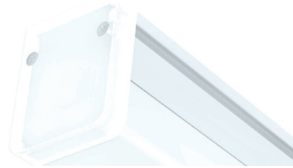
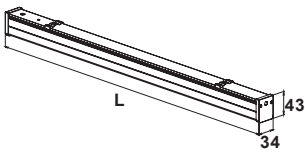


Suspended mounting



Luminaire is equipped with feeding cable running through the end cap, also can be moved on the top

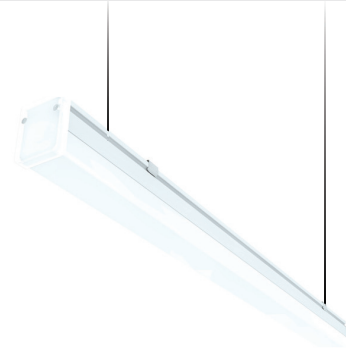
drawing



Special end caps for IP54 protection

Net lumen output	CCT	Power	Wiring	Dimensions	Weight	ACS	Purchase code
(lm)	(K)	(W)		(mm)	(kg)	#	
1050	3000	10	ECG	L: 586	0,34	1,2	VerS/P.60-10-1050/10.3/IP54O5A
1140	4000	10	ECG	L: 586	0,34	1,2	VerS/P.60-10-1140/10.4/IP54O5A
1300	3000	12.5	ECG	L: 874	0,48	1,2	VerS/P.90-12.5-1300/10.3/IP54O5A
1415	4000	12.5	ECG	L: 874	0,48	1,2	VerS/P.90-12.5-1415/10.4/IP54O5A
2020	3000	19	ECG	L: 1162	0,62	1,2	VerS/P.120-19-2020/10.3/IP54O5A
2195	4000	19	ECG	L: 1162	0,62	1,2	VerS/P.120-19-2195/10.4/IP54O5A
3145	3000	28	ECG	L: 1450	0,73	1,2	VerS/P.150-28-3145/10.3/IP54O5A
3420	4000	28	ECG	L: 1450	0,73	1,2	VerS/P.150-28-3420/10.4/IP54O5A
#	Accessories (ACS)			Purchase code			
1	Single suspender 1.5 m			ACSus/VerP 1/1.5			
2	Transparent Feeding Cable for Versuz Surface and Suspended 3 X 0.75mm <sup>2</sup> VDE certified cable L=1m (the length of the cable can be different)			AC/TC/Ver 3/1*			

**VERSUZ**



Mareli Ltd. reserves the right to introduce structural changes and modify the luminaires  
 Luminous flux and connected electrical load are subject to an initial tolerance of +/- 5%. Tolerance of color temperature: +/-150 K.  
 Unless stated otherwise, the values apply to an ambient temperature of 25°C.